

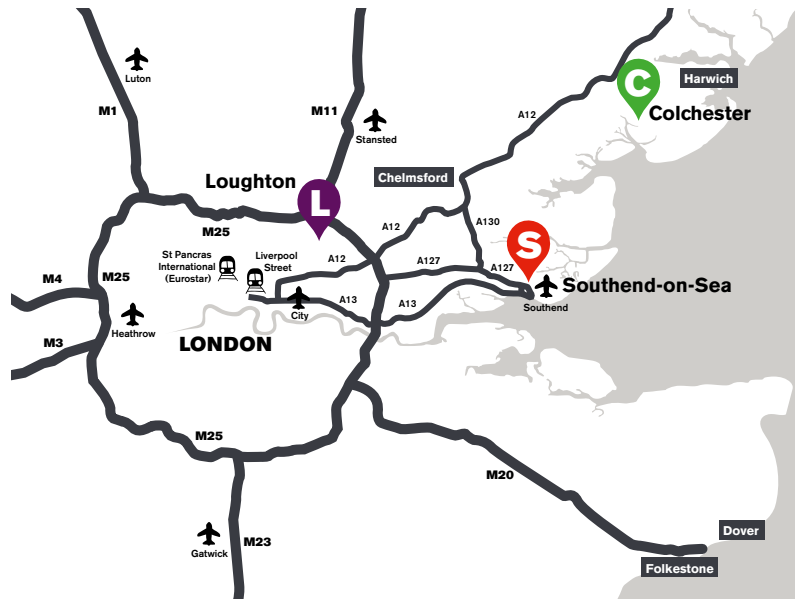


University of Essex

WELCOME HOME

International Prospectus 2019

OUR GREAT LOCATION



OUR CAMPUSES

- C Colchester
- S Southend
- L Loughton



Contents

- Location / This is us **2-3**
- Our facilities **4-5**
- Colchester campus **6-9**
- Southend campus **10-13**
- Accommodation **14-15**
- Fees and scholarships **16-17**
- Careers **18-19**
- Student support **20-21**
- Our Students' Union **22-23**
- How to apply **24-25**
- Our courses **27-35**
- Contact details and important information **36-37**

THIS IS US ACCORDING TO THE STATISTICS

Top 25 in the Times

Times Good University
Guide 2018



25th in the UK for research quality

Times Good
University Guide 2018

Gold

Teaching Excellence
Framework 2017



Top 15 for overall student satisfaction

National Student
Survey 2017, English
mainstream universities

Top 20 for the most international student community

in the THE World University
Rankings 2018



What the stats tell you is that at Essex we put equal emphasis on teaching and research. Our academics are daring, visionary thinkers who participate in internationally recognised research. They teach our students everything they learn because they want to inspire a new generation of experts – your generation.

OUR FACILITIES

The latest addition to the Colchester Campus is our new £13.2m **STEM building**. It will include a 180-seat wet lab for Biological Sciences and a 150-seat IT-rich exploratory learning space to enable collaboration between students across the Faculty of Science and Health.



Our campuses are growing and making more room for you. Here's a mere snapshot of what we offer. We are ranked 4th in the Times Good University Guide 2018 for spend on services and facilities per student, so you know we're investing in your student experience.

Our brand new £12m **Essex Sport Arena** has 1,655 seats and international standard facilities suitable for staging televised sporting events. The Arena contains eight badminton courts, three basketball courts, three netball courts, five volleyball courts and two futsal courts.



The **Forum Learning Hub** in Southend is open 24 hours a day and offers a range of diverse spaces for study and group work. In the Forum you'll also find our large lecture theatre, a café and our friendly support services all under one roof.



The **Silberrad Student Centre** offers 24/7 access to a combination of IT-rich areas and study pods for group work. The Centre is also home to our Student Services Hub – your one-stop-shop for finance and support services.

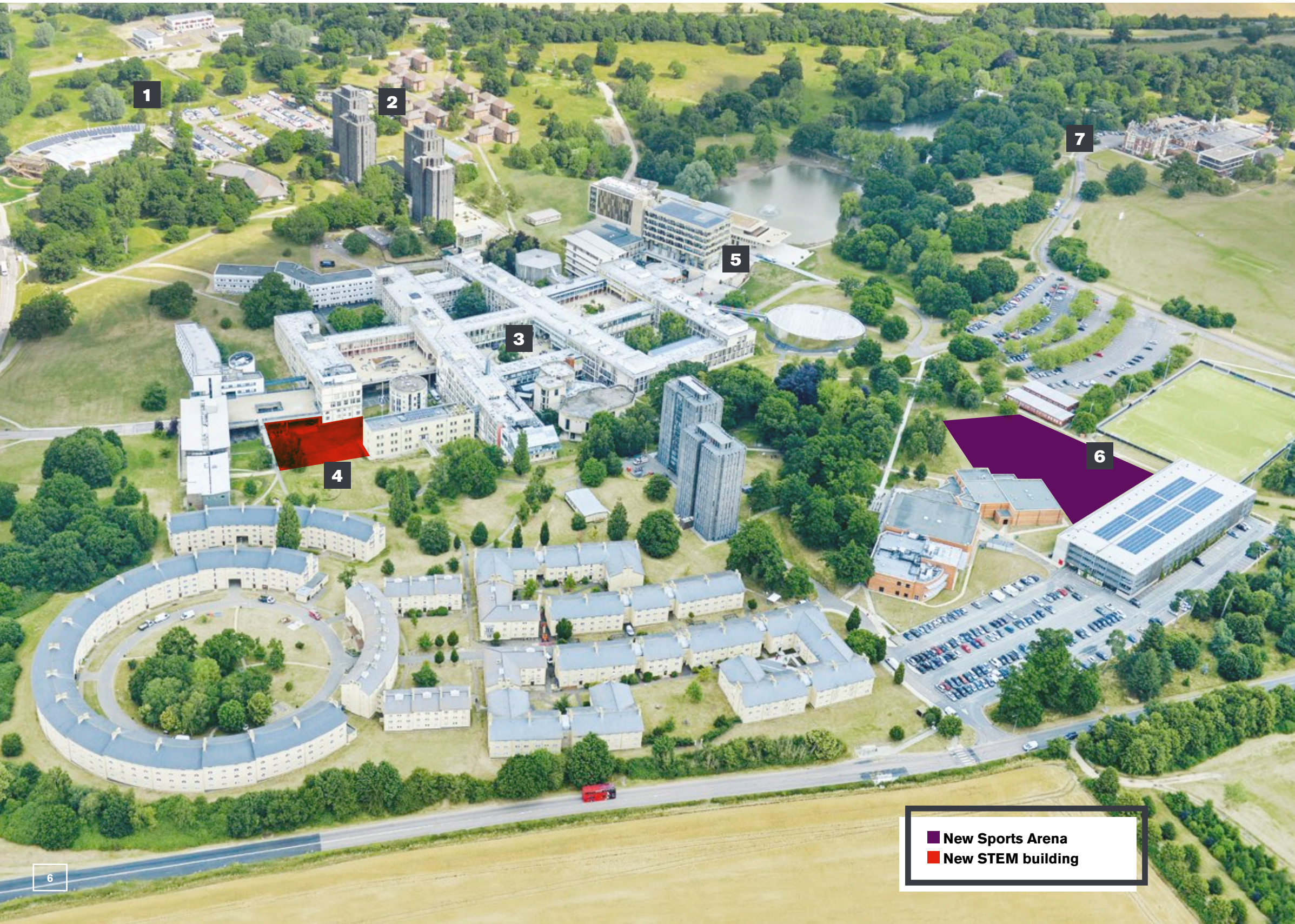
Reflecting our commitment to responsible business practice in both teaching and research, **Essex Business School** in Colchester is a zero carbon building. It features a winter garden, café and lots of breakout spaces for post-lecture discussions.



The **Forum library** in Southend is a vibrant contemporary space with outstanding learning facilities and a central location. Albert Sloman library in Colchester houses some of the UK's finest collections, providing fascinating insight into Latin America, Russia and Eastern Europe.

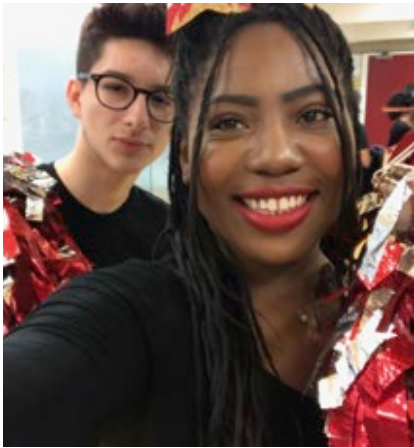


COLCHESTER CAMPUS



- 1 North-west campus**
 - University Quays accommodation (10-minute walk from central campus)
 - The Meadows accommodation (5-minute walk from central campus)
 - **Brand new** The Copse accommodation (5-minute walk from central campus) (opened 2018)
 - Essex Business School
 - Day Nursery
 - Knowledge Gateway
- 2 North campus**
 - North Towers accommodation
 - The Houses accommodation
 - Health Centre
 - Tony Rich Teaching Centre
 - The North Teaching Centre
- 3 Central campus**
 - Lecture Theatre Building
 - Academic departments
 - Lecture and seminar rooms
 - Students' Union (SU)
 - Bars, cafés and restaurants
 - Shops, banks and Post Office
 - Information Centre
- 4 South campus**
 - South Towers accommodation
 - South Courts accommodation
 - **Brand new** STEM building (opened 2018)
- 5 East campus**
 - Ivor Crewe Lecture Hall
 - Silberrad Student Centre, ESCALA Gallery, and SU Creative Studios
 - Albert Sloman Library
 - Lakeside Theatre and Café
 - Art Exchange
 - Waterstones bookshop
 - Parkland and lakes
- 6 South-east campus**
 - Tennis courts
 - Synthetic turf pitch
 - Sports Centre
 - **Brand new** Essex Sport Arena (opened 2018)
 - Evolve Gym
- 7 Wivenhoe Park**
 - Wivenhoe House restaurant and hotel
 - Edge Hotel School
 - ESCALA Space
 - Campus allotment
 - Sports pitches and parkland

■ New Sports Arena
■ New STEM building



COLCHESTER LIFE

Diverse and cosmopolitan with a population of around 180,000 people, Colchester is a great student town, offering a rich mix of bars, restaurants, theatres and music venues. It is also the oldest recorded town in Britain with evidence of Roman settlement found around town. Our campus is located just outside of town and offers extensive facilities and support services to ensure you achieve the most from your studies.

Shopping, food and nightlife

Colchester's Culver Square and Lion Walk are home to a fantastic range of familiar shops and high-street fashion. What makes our town really distinctive however are all of the specialist and unique shops on offer. Stroll down Sir Isaac's Walk or Eld Lane, two of the quirkiest streets in the town centre, and you'll find a mixture of retro clothing boutiques, old-school sweet shops, furniture stores, jewellers, and independent health food stores. You can also find everything from American candy to Korean noodles and Russian delicacies in and around the town centre. There's a huge range of restaurants with student-friendly prices offering local and international cuisines.

Colchester also has a great selection of bars, pubs, cafés, nightclubs, visual and performing arts and live music venues to cater for all tastes. On campus you'll find a range of food options, with a great selection of halal, vegan and vegetarian dishes and groceries available, as well as a range of entertainment options.

Travel

Colchester has great travel connections for both the UK and abroad. We're an hour away from London Stansted Airport which offers low-cost flights to many European destinations, and London's other airports are also easily accessible by public transport. Travelling in the UK is easy with London and its connections only an hour away by train.

Things to see and do

- The Colchester Castle and its museum offer a great introduction to the town's Roman and Norman history.
- Mersea Island under an hour from campus offers some of the tastiest seafood around, including the famous Mersea oysters.
- Colchester Zoo is home to a huge range of species and offers a great day out close to the town centre.

“Essex was the perfect choice for me as the Colchester Campus is only a 50-minute train ride from the centre of London and an hour from Stansted airport, where I can get a flight directly to my hometown. Another influential reason for choosing Essex is because it is a campus university and has everything I need on site.

“During Freshers’ Fair I joined the dance, photography, Nordic, and business societies so, through these, made lots of friends. At Essex I have had the chance to experience a very internationally diverse campus community, as over 130 different nationalities are represented, and I am pleased to have had the chance to be a part of this.”

Effie Lunde, BSc Management and Marketing student, Sandefjord, Norway

SOUTHEND CAMPUS



1 Southend Pier



3 The Gateway Building



5 Southend High Street



6 Clifftown Theatre and Studios



2 The Forum



4 University Square accommodation

1 Seafront

- Southend Pier
- Adventure Island amusement park
- Beach and promenade

2 The Forum

- 24/7 access to The Learning Hub
- Student Services
- Public and academic library
- Lecture and seminar rooms

3 The Gateway Building

- Academic departments
- In-house doctor and dentist
- Lecture and seminar rooms
- Southend Central train station (50 minutes to London)

4 University Square

- University Square accommodation
- Supermarket
- International shops

5 Southend High Street

- Cinema
- Cafés and restaurants
- Post Office
- Chain stores and independent shops

6 Clifftown

- Clifftown Theatre and Studios
- Prittlewell Square gardens
- The Railway Hotel music venue

7 Victoria Gateway

- Southend Victoria train station for travel to Colchester, London, and Southend Airport for flights all over Europe



SOUTHEND LIFE

Historically a British holiday destination, Southend-on-Sea has evolved into a thriving cultural centre of music, theatre, comedy and cuisine – whilst retaining all the charm you’d expect from a traditional English seaside town. Our campus is located in the heart of the town and all of its facilities.



Sports, arts and leisure

If you like to be active you can take advantage of Southend's great location with sailing, windsurfing, jet skiing and canoeing all available on the seafront. There is a thriving live music and arts scene, with two theatres, numerous art galleries, and festivals throughout the year. If food is your thing, you are spoilt for choice with hundreds of places to dine in town, from independent Portuguese and Thai restaurants to popular franchise outlets.

Our campus

Our Southend Campus offers contemporary learning and teaching spaces. The Forum building has an in-house library, gallery and café. It also houses our Learning Hub, plus all of our student support services in one convenient place.

Our Learning Hub is open 24 hours a day. From quiet reading spaces to technology-driven group working pods, there are a range of diverse spaces, each dedicated to a different style of learning and studying.

The Gateway Building houses a doctor's practice, a dental practice and our multi-faith chaplaincy.

The Students' Union organises and facilitates an array of activities and sports in Southend, from yoga lessons to nights out in town. You can also enjoy the SU Lounge venue, with comfortable sofas, game consoles and board games to keep you entertained.

Location

Southend-on-Sea's location means there's plenty to see and do. Well-known attractions abound, from Adventure Island amusement park and arcades to the famous Rossi ice-cream parlour.

Southend is also a great gateway: London is just 50 minutes away by train, while London Southend Airport is only three miles from campus, offering budget flights to a range of European destinations.



“During my time here, Southend has offered opportunities to learn and excel academically and professionally – as well as a great student experience. With a small and diverse student community of just over 1,300 students it is easy to get to know each other, access support services and meet with your academics.

“Throughout the year we have BBQs, parties, fireworks, cultural celebrations, live entertainment, inspirational guest speakers and competitions. Without any doubt, I’d recommend Southend as your place of study.”

Ernest Nyarko, Students' Union Vice-President Southend



ACCOMMODATION

South Courts

Size: 1,218 rooms
Cost per week: £144.13-146.23
Location: Colchester Campus

4-12 rooms per flat, en suite facilities, some adapted rooms available



The Towers

Size: 1,142 rooms
Cost per week: £81.83-93.87
Location: Colchester Campus

13-16 rooms per flat, shared showers and toilets



The Meadows

Size: 228 townhouse rooms plus 420 flats with en suite rooms
Cost per week: £140.63-147.63
Location: Colchester Campus

12 rooms per townhouse with lounge/kitchen, 5-7 rooms per flat with shared kitchen



University Quays

Size: 766 rooms
Cost per week: £133.49-159.18
Location: Colchester Campus

7-8 rooms per flat, en suite facilities



The Houses

Size: 267 rooms
Cost per week: £130.55-133.49
Location: Colchester Campus

4-6 rooms per flat, en suite facilities, some adapted rooms available



The Copse

Size: 643 single en suite rooms and studios
Cost per week: £153.58-180.46
Location: Colchester Campus

4-12 rooms per cluster flat, en suite facilities, studio flats also available



University Square

Size: 497 rooms and 64 studio flats
Cost per week: £143.92-177.59
Location: Southend Campus

11 rooms per flat, en suite facilities, studio flats have own kitchenette, some adapted rooms available



These figures show the current cost per week of our accommodation. It's likely that our rental charges for 2019-20 will increase from these current prices. We'll publish the new prices on our website as soon as they are available.

essex.ac.uk/accommodation

FEES AND SCHOLARSHIPS

When you come to study with us, we understand that you are making a significant investment of time and money, so we want to make sure it pays off. Whether it's through our world-class facilities or our award-winning accommodation, your time at Essex is guaranteed to leave you with memories that no one can put a price on.



Our international fees

UNDERGRADUATE FEES – BY DEPARTMENT

History; Health and Social Care*; Languages and Linguistics; Literature, Film and Theatre Studies; Psychosocial and Psychoanalytical Studies; Philosophy and Art History; Sociology	£15,000
East 15; Essex Business School; Law and Human Rights; Economics; Government; Mathematical Sciences; Sports, Rehabilitation and Exercise Sciences	£15,750
Biological Sciences, Psychology	£16,980
Computer Science and Electronic Engineering	£17,500
Living and accommodation costs (per year, approximately)	£7,745-13,418

*Fees vary by course, please see our website for further details

POSTGRADUATE TAUGHT FEES – BY DEPARTMENT / PROGRAMME

History; Law; Literature, Film and Theatre Studies; Philosophy and Art History; Biological Sciences; Computer Science and Electronic Engineering; Health and Social Care; Mathematics; Psychology; Sports, Rehabilitation and Exercise Sciences; Government; Languages and Linguistics; Psychosocial and Psychoanalytical Studies; Sociology	£17,040
Essex Business School; Economics	£17,560
East 15 (Acting)	£15,935
East 15 (Theatre Directing)	£14,490
The Essex MBA	£19,500
Graduate Diploma	£11,245
Graduate Certificate	£5,625

POSTGRADUATE RESEARCH FEES

Non-lab-based	£14,720
Lab-based	£17,040
Living and accommodation costs (per year, approximately)	£10,500-15,900

For undergraduate students and postgraduate students on courses with a duration of more than one year with an international fee status, tuition fees normally increase for each academic year of study. This annual increase will be 5% or the annual increase in the RPI-X index, whichever is higher.

University of Essex scholarships

AWARD	AMOUNT	ELIGIBILITY	WEBSITE
Regional scholarships - undergraduate and postgraduate awards	Varying amounts	Awards are available for students from Africa, the Americas, the Indian sub-continent and Norway. Please see website for details and further eligibility criteria	essex.ac.uk/fees-and-funding
International Baccalaureate Excellence Scholarship	£2,000	Students achieving 34 points or more in the International Baccalaureate	essex.ac.uk/fees-and-funding/ug/scholarships/international-baccalaureate
Academic Excellence International Masters Scholarships	Varying amounts	Please see website for details	essex.ac.uk/fees-and-funding/masters/scholarships
University of Essex Doctoral Scholarships	Varies by department and scheme	Please visit the website for full criteria	essex.ac.uk/fees-and-funding/research/scholarships
Loyalty discounts	Up to 25% of tuition fees	Graduates from Essex Bachelors, Masters and Graduate Diploma courses and former study abroad students	essex.ac.uk/fees-and-funding/masters/loyalty

A number of external scholarships and awards are also available. Please visit essex.ac.uk/fees-and-funding for further information.

At Essex, we're invested in your future. We believe that the graduates who really succeed are the ones who put in that little bit extra. We support and encourage you to make the most of your time at university and beyond.

Enhance your employability

Our courses are designed to equip you with a range of transferable skills and experiences which will make you attractive to future employers. All of our undergraduate degrees include a module on employability, with special emphasis on your area of study. We also offer a whole range of additional services, support and opportunities for you to develop yourself further to really stand out in front of future employers.

Learn a language

We offer four ways for all our students to learn a new language, including the popular Languages for All programme offering lessons in up to seven languages (Arabic, French, German, Japanese, Mandarin Chinese, Russian and Spanish!)

essex.ac.uk/life/student-services/learn-a-language

The Big Essex Award

Our Employability Award lets you gain recognition for extra-curricular activities, such as: part-time work, volunteering through the Students' Union vTeam, language learning through Languages for All, having an executive role in a student society or sports club, becoming a course representative, taking part in an undergraduate research placement and more.

essex.ac.uk/careers/bige

Employability workshops

Our workshops will help you successfully apply for work, both during and after your studies. Training includes help with creating the perfect CV, tips on how to excel at interviews and guidance on delivering a professional presentation.

essex.ac.uk/careers

Study abroad opportunities

Most courses offer study abroad opportunities at undergraduate level. We have relationships with over 150 institutions in 40 countries worldwide.

essex.ac.uk/essexabroad

Gain real-life experience

There are a number of ways in which you can gain some experience during your studies at Essex.

Our Career Hub job listings board lists vacancies for a wide range of part-time work opportunities, both on and off campus, including our Frontrunner student internship programme, work in the Students' Union venues and services, opportunities to work as a Student Ambassador or Residence Life Assistant, and a whole range of jobs available through local businesses and organisations. You can also use Career Hub to search for full-time graduate jobs.

essex.ac.uk/careers

Develop your research skills

Research is an important component of our degrees and all of our undergraduate students carry out their own research project at the end of their course. If you want to develop your research skills even further, our UROP (Undergraduate Research Opportunities Programme) allows undergraduate students to take part in ongoing research at the University as research assistants. This paid opportunity gives you training in research skills and may help you prepare for your final year dissertation or project.

essex.ac.uk/urop

Work placement as part of your studies

In most degree subjects we offer the opportunity for you to include a work placement year as part of your undergraduate degree – this will usually be a year-long paid work placement in industry, relevant to your field of study. We also offer Masters programmes including a Professional Placement in selected subjects.

essex.ac.uk/careers/placements

essex.ac.uk/masters/masters-with-professional-placements

Immigration limitations on working in the UK during your studies

EU nationals currently have the right to work in the UK. Students from outside the EU will likely have restrictions on the hours they are permitted to work whilst studying in the UK. Such conditions should be detailed on the Entry Clearance Sticker in your passport or Biometric Residence Permit. Please visit our immigration website for further information.

Essex is a part of the Home Office Tier 4 visa pilot scheme, which means that students on our Masters programmes lasting up to 13 months should be eligible to remain in the UK for six months after finishing their Masters course. The additional time may be useful for students wishing to switch to a UK work visa and take up a graduate role.

essex.ac.uk/immigration

Here for you

Our Employability and Careers Service offer dedicated international careers advice and support available during your studies and after you graduate, helping you look for graduate-level work both in the UK and abroad and bringing you together with potential employees at careers events.

Download our guide to International Careers support:

essex.ac.uk/international

Recent graduate employers

- | | |
|-------------------------|--|
| ■ Amnesty International | ■ Ministry of Foreign Affairs, Qatar |
| ■ Barclays | ■ Morgan Stanley |
| ■ Bloomberg | ■ Procter & Gamble |
| ■ BP | ■ Panasonic |
| ■ Cancer Research UK | ■ Pricewaterhouse Coopers |
| ■ Citi | ■ Shell |
| ■ Credit Suisse | ■ The Royal Shakespeare Company |
| ■ Deloitte | ■ United Nations |
| ■ Fujitsu | ■ United Overseas Bank (UOB), Malaysia |
| ■ GlaxoSmithKline | |
| ■ Goldman Sachs | |
| ■ Intel | |
| ■ KPMG | |
| ■ Microsoft | |

STUDENT SUPPORT



Make the most of your life at Essex with our award-winning student support services. Benefit from academic skills support, mentoring and general guidance. Find space for worship, meditation, prayer and quiet reflection or just have a friendly chat.

Welfare and support

As an international community we understand the needs and concerns of international students, and do our best to provide you with excellent support facilities.

Our support and welfare services include healthcare, immigration advice, support with your faith and assistance with improving your academic skills, as well as places you can go if you just need to talk to someone.

Support and guidance

Student Services Hubs

Our Student Services Hubs can help with general wellbeing and funding advice. We also have facilities and advice available for students with disabilities and those struggling with issues like settling in and exam anxiety.

Immigration

UK immigration advice is regulated, so can only be provided by our authorised advisers.

Please visit essex.ac.uk/immigration for further information and the 'ask us a question' section if you have a query.

Support with your studies

You may find studying at a UK university very different to your home country, and it may be the first time you'll be studying in English. We aim to ensure that you can get the most out of your education by providing a range of academic and English language support classes.

Mentoring

Our academic departments also provide their own support services, with most departments running student mentoring schemes, and our lecturers and professors offering office hours for one-to-one guidance with your studies.

Health and wellbeing

Health services

There is a health centre on our Colchester Campus which offers appointments with male and female doctors, as well as specialist services and counselling. Our Southend Campus has dental and GP training practices, supported by the local Primary Care Trust, on site. It is important to register with the health centre as soon as you can so that you can receive treatment when you need it.

Nightline

Nightline is an award-winning, student-volunteer-run advice and support service, which is available overnight throughout term-time. The volunteers are able to provide a listening ear and impartial advice, or a cup of tea and a friendly talk if you're just feeling homesick.

Residence Life

The Residence Life team offers support within your on-campus accommodation by providing out-of-hours support, helping you get to know your flatmates, and organising fun events to help you meet other students in your accommodation building.

Religious life

Our Multi-Faith Chaplaincy is for all members of the University community – of all faiths and none. We offer on-campus pastoral care, a confidential listening ear and spiritual support. We also offer a safe place to practise or explore faith, either in the Chaplaincy or by connecting you to a local place of worship.

Students with families

It is important that you're aware of the additional costs and implications of bringing your family with you to the UK.

Please visit our website for further information for students with dependants. If your family will need dependants visas we recommend you check the Home Office criteria to see if they would be eligible to apply.

“At Essex the atmosphere is very positive and welcoming, and the University makes it clear that it cares about its students' success in every aspect, including education and wellbeing. It keeps students engaged and offers countless opportunities for students to get involved in university and the community which I think is really important.”

Kimia Aghasoleimani, BSc Biomedical Science

essex.ac.uk/students

OUR STUDENTS' UNION



WE WANT
TO BE THE
WORLD'S
MOST
STUDENT-
CENTRED
ORGANISATION

“When I first arrived in the UK, I did not know what to expect. While university may seem daunting at first, just remember to be proud of where you came from and have faith in how far you’ll go. The Students’ Union will be there every step of the way of your Essex adventure to provide support, guidance and a cheery smile. At Essex, you won’t just get an amazing degree – you’ll have a life changing experience you will never forget!”

Yasmin Abdullah, Malaysia, Students’ Union VP International 2017-18

Studying at the University of Essex means being part of our award-winning Students’ Union. Here’s what makes it stand out.

Our SU, as they are known, run an entire student town on our Colchester Campus, complete with shops, cafés, bars, a nightclub, restaurants and even a hair salon. If you’re based in Southend you can grab a coffee or play videogames with friends in the SU Lounge, and at Loughton you’ll find a brand new café-bar.

Get involved

At Essex, we want you to challenge everything and push yourself, but why stop in the classroom? Our Students’ Union offers membership to over 100 societies. You can meet people on campus before you join the University through social media, and we even have a Harry Potter society!

You can browse all current societies on the SU website and if you don’t find one that suits you, you can set one up once you arrive on campus. essexstudent.com/societies/findasociety

An international community

Our students come from around 140 different countries and the SU promises to benefit all students. There are over 30 different cultural societies where you can meet other students from your country or explore other cultures. We also have the International Students’

Association (ISA) who celebrate and promote cultural diversity on campus, and represent our international students’ interests through the SU VP International role.

Stay active

Sport more your thing? We have over 40 teams, from those you might expect like football, rugby and netball plus some sports you may have never tried before. From fencing to yoga, we’ve got plenty to keep you busy.

What’s on

University shouldn’t be all work. We’ll make sure you’re never bored at Essex with activities day and night to keep you occupied. Our cinema shows the latest films, we have quizzes in the SU Bar, open forums for heated debates and so much more.

Shape everything

Students run the SU. You get to have your say and make an impact on life on campus. Whether it’s about what gets stocked in our stores, requesting more vegan options on campus or what we campaign for together. Whatever you want to do, we’re here to make it happen. Nothing is too big or too small.



HOW TO APPLY



Applying

For undergraduate degrees

Applications for Bachelors degrees should be made through UCAS. Our UCAS code is E70.

ucas.com

If you only want to apply to the University of Essex and do not plan to make a UCAS application, you can apply to us directly through our online application form.

essex.ac.uk/direct

For Masters degrees

We welcome online applications for our Masters degrees.

essex.ac.uk/masters/applying-to-essex

Our online application form takes about 20 minutes to complete and you can save and return to it if you need to. Your supporting documents must include:

- transcripts of your university-level studies to date
- a personal statement making clear why you wish to study in the UK and why you have chosen the subject you are applying for any other items which your department requires (CV/work sample)

If you are offered a place on a taught course, your offer may be made conditional upon additional documents such as references, certificate of English Language proficiency, final transcript and degree certificates. Full details, including where to send information, are available online through the link above.

For research degrees

We welcome online applications for our research degrees.

essex.ac.uk/postgraduate-research-degrees/applying-to-essex

You will need to submit a research proposal, which includes:

- a working title and key words
- a summary of the aims and objectives of your research
- an outline of the ways you will meet these aims and objectives, referring to research methods and specific resources you will use
- evidence of your awareness of relevant literature and theoretical approaches
- an overview of the expected outcomes and the original contribution your research will make to existing bodies of knowledge
- a brief statement on how your research interests tie in with those found in the department, school or centre

You must also provide the following:

- two verifiable references from academic referees
- transcripts of your university-level studies to date
- copies of certificates for any degrees or other awards you have completed
- evidence of your English language level (such as IELTS score)
- any other items which your department requires (CV/personal statement/work sample)

General entry requirements

Undergraduate

Typical entry requirements for most courses are three UK A-levels at grades BBB-BCC or 30-28 IB points. Entry requirements for integrated Masters programmes and LLB English and French Laws (Maitrise) will be higher. International equivalents can be found on our online course finder essex.ac.uk/subjects or on our country-specific webpages essex.ac.uk/international/country-specific-information.

Some courses will have additional subject-specific requirements, please visit our course finder for further information.

Some programmes will have additional requirements, such as auditions (East 15 acting courses), interviews or skills tests.

Taught courses (PGT)

We will consider all applicants with a 2:2 or above, or equivalent international qualifications. For some courses there may be additional requirements.

Research degrees (PGR)

In most cases you will need a good performance in a Masters course in order to study a PhD in most disciplines.

A well-developed research proposal is required, in an area in which we can offer supervision.

English language requirements

If English is not your first language, you need to provide evidence of your ability to understand and express yourself in English for academic purposes.

If you have a score which is less than two years old in an internationally recognised test, such as IELTS, TOEFL or Pearson Test of English (Academic), please supply your results on your application (undergraduate) or a copy of your certificate with your application (postgraduate). Other tests or qualifications may be accepted, please visit our website for further details:

essex.ac.uk/undergraduate/applying-to-essex
essex.ac.uk/masters/applying-to-essex

If you do not have a current or acceptable score, your offer will be conditional upon you achieving an acceptable English language qualification.

The English language score required will vary by level of study and subject, please see individual subject pages for indicative requirements.

Please note that students who need a Tier 4 visa to study in the UK must meet the Home Office minimum English language requirements, including component requirements. See our immigration pages for further information.

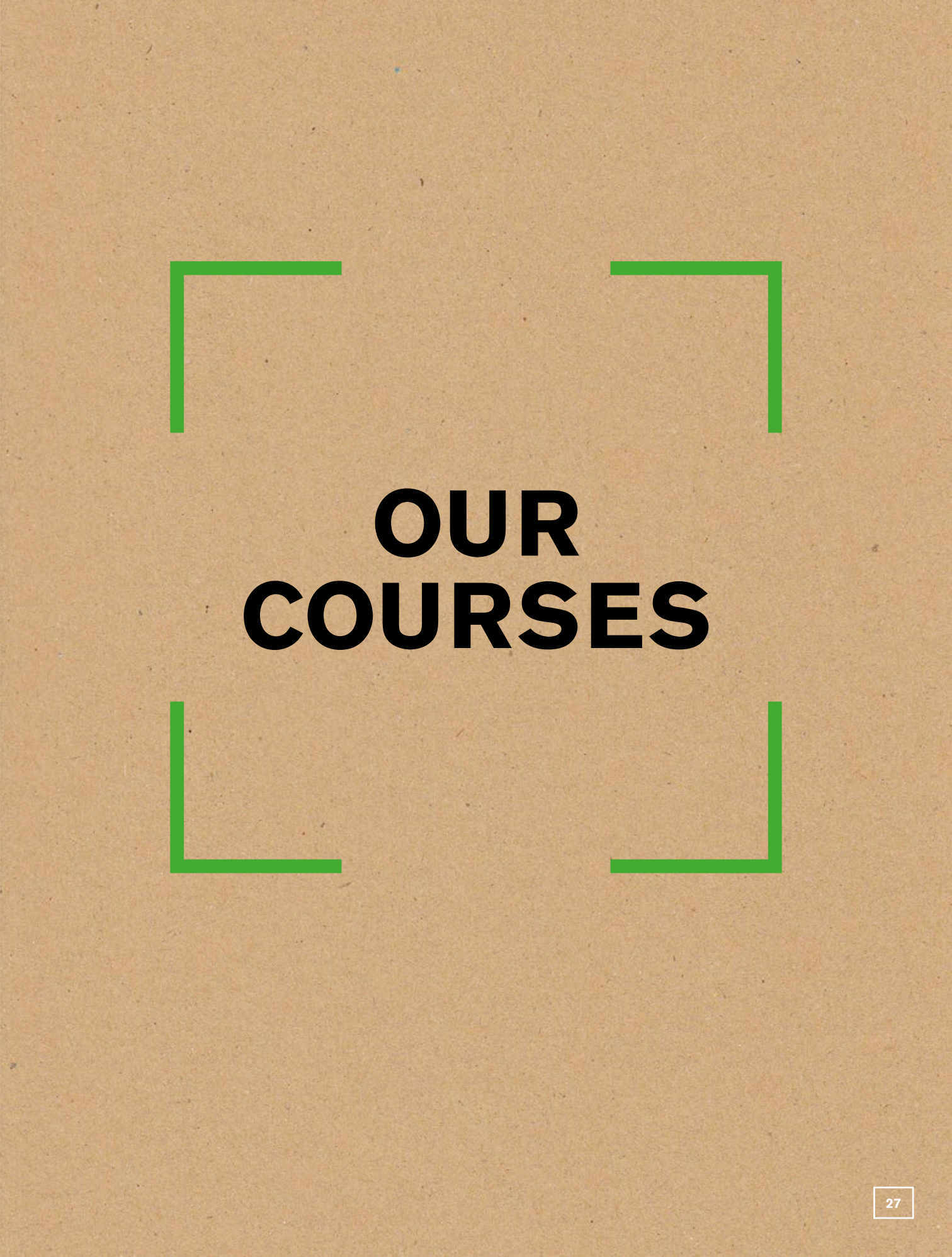
Personal statements

Due to Home Office requirements, please ensure your personal statement makes it clear why you wish to study in the UK and why you've chosen the subject you are applying for. You should also tell us about your full academic history including any periods of time spent studying in the UK. If you have spent any time out of education, please also let us know what you were doing during this time.

Immigration and applying for a visa

If you're applying from outside the European Economic Area and require a visa to study in the UK, you'll need to apply under Tier 4 of the UK Government's Points Based Immigration System (PBIS). We are required to ensure compliance with Home Office regulations as a Tier 4 Sponsor. In some circumstances, we may be unable to make an offer or to issue a Confirmation of Acceptance for Studies (CAS) if an applicant cannot meet all Tier 4 requirements, including when there have been changes to these requirements made by the Home Office. Refer to our webpage for information about immigration and applying for a visa.

Essex is a part of the Home Office Tier 4 visa pilot scheme, which means that students on our Masters programmes lasting lasting up to 13 months should be eligible to remain in the UK for six months after finishing their Masters course. The additional time may be useful for students wishing to switch to a UK work visa and take up a graduate role.
essex.ac.uk/immigration



ACTING (EAST 15)

- East 15 is a full member of the University/ Resident Theatre Association (URTA) of America
- Enjoy purpose-built facilities at Loughton or Southend
- We are ranked third in the UK for drama (Guardian University Guide 2018) and number one in the UK for diversity (The Stage)

UNDERGRADUATE

BA Acting
BA Acting (International)
BA Acting and Contemporary Theatre
BA Acting and Stage Combat
BA Acting and Community Theatre
BA Physical Theatre
BA Stage and Production Management
BA Creative Producing (Theatre and Short Film)
BA World Performance
Cert HE Theatre Arts
International Foundation in Acting

POSTGRADUATE

MA Acting
MA Acting (International)
MFA Acting (International)
MA Theatre Directing
MFA Theatre Directing

Entry requirements
Auditions or interviews will be required. Please visit the department's website for further information about audition and interview dates in your country and online auditions.

- English language requirements**
- Undergraduate – Cert HE Theatre Arts - IELTS 5.0 overall. All other undergraduate courses - IELTS 6.0 overall
 - Postgraduate – IELTS 6.0 overall

- Tuition fees**
- Undergraduate: £15,750
 - Masters: £14,490 (Theatre Directing) / £15,935 (Acting)

east15.ac.uk

BIOLOGICAL SCIENCES

- Enjoy first-class lab facilities in our brand new STEM building
- Two-thirds of our research is rated "world leading" or "internationally excellent" (REF 2014)
- Range of placement options at undergraduate level

UNDERGRADUATE

BSc Biological Sciences ⁺
BSc Biochemistry ⁺
BSc Biomedical Science ⁺
BSc Genetics ⁺
BSc Marine Biology ⁺

POSTGRADUATE

MSc Biotechnology
MSc Molecular Medicine
MSc Tropical Marine Biology
MSD, MPhil, PhD Biochemistry
MSD, MPhil, PhD Biological Sciences
MSD, MPhil, PhD Cell and Molecular Biology
MSD, MPhil, PhD Environmental Sciences
MSD, MPhil, PhD Immunology
MSD, MPhil, PhD Marine Biology
MSD, MPhil, PhD Microbiology
MSD, MPhil, PhD Molecular Medicine

⁺ This course has an optional year abroad variant
^{*} This course has an optional placement year variant

Entry requirements
Please see our website for academic requirements.

- English language requirements**
- Undergraduate – IELTS 6.0 overall
 - Postgraduate – IELTS 6.5 overall

- Tuition fees:**
- Undergraduate: £16,980
 - Masters: £17,040
 - Research: £17,040

essex.ac.uk/bs

COMPUTER SCIENCE AND ELECTRONIC ENGINEERING

- We offer exceptional purpose-built facilities including state-of-the-art labs
- We specialise in areas as diverse as assistive technologies, computer games, artificial intelligence, evolutionary computation, Big Data, and robotics
- You can gain professional IET and BCS accreditation with some courses

UNDERGRADUATE

BSc Computer Science ⁺
BEng Computer Networks ⁺
BSc Computer Games ⁺
BEng Computer Systems Engineering ⁺
BEng Computers with Electronics ⁺
BSc Information and Communication Technology ⁺
BSc Data Science and Analytics ⁺
BEng Electronic Engineering ⁺
BEng Communications Engineering ⁺
BEng Robotic Engineering ⁺
MEng Electronic Engineering (Integrated Masters)
MEng Communications Engineering (Integrated Masters) [*]
MSci Computer Science (Integrated Masters) [*]

POSTGRADUATE

MSc Advanced Computer Science
MSc Algorithmic Trading
MSc Artificial Intelligence
MSc Big Data and Text Analysis
MSc Computational Finance
MSc Computer Engineering
MSc Computer Games
MSc Computer Science
MSc Internet of Things
MSc Intelligent Systems and Robotics
MSc Electronic Engineering
MSc Computer Networks and Security
MSc Global Communication Systems
MSD, MPhil, PhD Applied Physics
PhD Computational Finance
MSD, MPhil, PhD Computing and Electronic Systems
MSD, MPhil, PhD Computer Science
MSD, MPhil, PhD Electronic Systems Engineering

⁺ This course has an optional year abroad variant
^{*} This course has an optional placement year

Entry requirements
Please see our website for academic requirements.

- English language requirements**
- Undergraduate – IELTS 6.0 overall
 - Postgraduate – IELTS 6.0 overall

- Tuition fees:**
- Undergraduate: £17,500
 - Masters: £17,040
 - Research: £14,720

essex.ac.uk/csee

ECONOMICS

- We're ranked in the UK's top 25 for Economics (TGUG 2018)
- Ranked among the top 150 departments in the QS World University Rankings (2018)
- We achieved 92% student satisfaction in the latest assessment (NSS 2017)

UNDERGRADUATE

BA Business Economics ⁺
BA, BSc Economics ⁺
BA, BSc Management Economics ⁺
BA, BSc International Economics ⁺
BA, BSc Financial Economics ⁺
BA Financial Economics and Accounting ⁺
BSc Economics with Computing ⁺
BSc Economics with Mathematics ⁺
BA, BSc Economics with Psychology ⁺
BA History and Economics ⁺
BA Economics with a Modern Language (includes year abroad)

POSTGRADUATE

MA Economics
MSc Money and Banking
MSc Behavioural Economics
MSc Financial Economics and Accounting
MSc Applied Economics and Data Analysis
MSc Computational Economics, Financial Markets and Policy
MSc Economics
MSc Economics with Professional Placement
MSc Economics and Econometrics
MSc Financial and Business Economics

MSc Financial Economics
MSc Financial Econometrics
MSc Financial Economics and Econometrics
MA International Development
MSc International Economics
MSc Management Economics
Graduate Diploma in Economics
MSc Quantitative International Development
Graduate Diploma in Statistics and Econometrics
MRes Economics
MPhil, PhD Economics

⁺ This course has an optional year abroad variant
^{*} This course has an optional placement year variant

Entry requirements
Please see our website for academic requirements.

- English language requirements**
- Undergraduate - IELTS 6.0 overall
 - Postgraduate - IELTS 6.5 overall for MSc Economics and Econometrics, MRes Economics and all research degrees
 - IELTS 6.0 overall for all other degrees

- Tuition fees:**
- Undergraduate: £15,750
 - Masters: £17,560
 - Research: £14,720

essex.ac.uk/economics

ESSEX BUSINESS SCHOOL

- Our professionally accredited courses may exempt you from a number of further professional exams, including ACCA, ICAEW and CIMA – see our website for full details
- Our dedicated student resources team provides support alongside academic learning
- Students can take advantage of free Bloomberg software training

UNDERGRADUATE

BSc Accounting ⁺ (C)
BSc Accounting and Finance ⁺ (C)
BSc Accounting and Management ⁺ (C)
BSc Accounting with Economics ⁺ (C)
BSc Banking and Finance ⁺ (C)
BSc Finance ⁺ (C)
BSc Finance and Management ⁺ (C)

BSc Business Management ⁺ (C)
BA Business Management and Modern Languages (C)
BA Business Management with a Modern Language (C)
BSc International Business and Entrepreneurship ⁺ (S)
BSc Management and Marketing ⁺ (C)
BBA Business Administration ⁺ (S)
BSc Tourism Management ⁺ (S)
BSc Marketing ⁺ (S)

POSTGRADUATE

MSc Accounting (C)
MSc Accounting and Finance (C)
MSc Accounting and Financial Management (C)
MRes Accounting (C)
MSc International Accounting and Banking (C)
MSc International Accounting and Banking with Professional Placement (C)
MSc Banking and Finance (C)
MSc Finance (C)
MSc Finance and Data Analytics (C)
MSc Finance and Investment (C)
MSc Finance and Management (C)
MSc Financial Engineering and Risk Management (C)
MSc Finance and Global Trading (C)
MSc International Finance (C)
The Essex MBA - Band D ⁺ (C)
MSc International Business and Entrepreneurship (S)
MSc Entrepreneurship and Innovation (S)
MSc International Logistics and Supply Chain Management (S)
MBM Master of Business Management (S)
MSc Business Analytics (S)
MSc Global Project Management (S)
MSc Human Resource Management (C)
MRes Management and Organisation (C)
MSc Management (C)
MSc Management (International) (C)
MSc Management (Marketing) (C)
MSc Management (Leadership) (C)
MSc Management (Advertising and Corporate Communications) (C)
MSc Marketing and Brand Management (C)
MSc International Marketing and Entrepreneurship (S)

MSD, MPhil, PhD Accounting (C)
MSD, MPhil, PhD Finance (C)
MSD, MPhil, PhD Business Administration (S)
MSD, MPhil, PhD Management Studies (C)
PhD Business Analytics (S)
PhD Entrepreneurship (S)
(C) Colchester Campus (S) Southend Campus + This course has an optional year abroad variant * This course has an optional placement year variant

Entry requirements
Please see our website for academic requirements.

English language requirements
■ Undergraduate – IELTS 6.0 overall
■ Postgraduate – IELTS 6.5 overall
■ MBA – IELTS 6.5 overall (with all scores 6.0+)

For any postgraduate management and marketing courses in Colchester, we also require a writing score of 6.0.

Tuition fees:
■ Undergraduate: £15,750
■ Masters: £17,560
■ MBA: £19,500
■ Research: £14,720

essex.ac.uk/ebs

HEALTH AND SOCIAL CARE
■ Gain real experience through work placements and research ■ Half of your nursing study period is spent in clinical settings ■ We have strong partnerships with local health authorities

UNDERGRADUATE
BSc Nursing (Adult) +
BSc Nursing (Mental Health) +
BSc Occupational Therapy
BA Social Work
BSc Speech and Language Therapy +*

POSTGRADUATE
MA, MPhil, PhD Health and Organisational Research
MSc Health Research
MSc Nursing (Adult) (pre-registration)
MSc Nursing (Mental Health) (pre-registration)

MSc Occupational Therapy (pre-registration)
MSc Speech and Language Therapy (pre-registration)
MSD, MPhil, PhD Health Studies
MSD, MPhil, PhD Nursing Studies
MSD, MPhil, PhD Occupational Therapy
MPhil, PhD Applied Psychology
MSD, MPhil Social Policy
PhD Social Work
MSD, MPhil, PhD Speech and Language Therapy
MPhil, PhD Applied Psychology
Doctorate Clinical Psychology
+ This course has an optional year abroad variant * This course has an optional placement year variant

Entry requirements
Please see our website for academic requirements. On-campus or online interviews may be required.

English language requirements
■ Undergraduate
- Nursing - IELTS 7.0 overall with 7.0 in each component
- Social Work and Occupational Therapy - IELTS 7.0 overall with a minimum of 6.5 in each component
- Speech and Language Therapy - 8.0 overall with a minimum of 7.5 in each component
■ Postgraduate – IELTS 6.5 overall. Please check the department's website for requirements for Pre-Registration courses and Doctorate Clinical Psychology

Tuition fees:
■ Undergraduate: £15,000 - £17,870
■ Masters: £17,040
■ Research: £14,720

essex.ac.uk/departments/health-and-social-care

HISTORY
■ We achieved 90% student satisfaction in the latest assessment (NSS 2017) ■ Gain experience through voluntary work at local museums, archives and heritage sites ■ More than two-thirds of our research was rated “world leading” or “internationally excellent” in the REF 2014 assessment

UNDERGRADUATE
BA History +
BA History and Criminology +
BA History with Film Studies +
BA History and Literature +
BA History with Human Rights +
BA Modern History +
BA Modern History and International Relations +
BA Modern History and Politics +
BA History and Sociology +

POSTGRADUATE
MA History
Postgraduate Certificate in History
MAD, MPhil, PhD History
+ This course has an optional year abroad variant

Entry requirements
Please see our website for academic requirements.

English language requirements
■ Undergraduate – IELTS 6.0 overall
■ Postgraduate – IELTS 7.0 overall

Tuition fees:
■ Undergraduate: £15,000
■ Masters: £17,040
■ Research: £14,720

essex.ac.uk/history

LANGUAGES AND LINGUISTICS
■ We're ranked in the UK's top 25 for Linguistics (TGUG 2018) ■ We're ranked among the top 150 departments in the QS World University Rankings (2018) ■ Work in our state-of-the-art interpreting lab and UN-style conference booths

UNDERGRADUATE
BA English Language and Linguistics +
BA English Language and Literature +*
BA English Language with Media Communication +*
BA Linguistics +*
BA Teaching English as a Foreign Language +*
BA Language Studies
BA French Studies and Modern Languages
BA German Studies and Modern Languages
BA International Relations and Modern Languages +*
BA Italian Studies and Modern Languages
BA Modern Languages
BA Modern Languages and English Language
BA Modern Languages and Linguistics
BA Modern Languages and Teaching English as a Foreign Language
BA Modern Languages with Latin American Studies
BA Spanish Studies and Modern Languages
BA Spanish, Portuguese and Brazilian Studies

MLang Modern Languages (Translation) (4 year Integrated Masters)
+ This course has an optional year abroad variant * This course has an optional placement year variant All Modern Language courses are four years including year abroad apart from BA Language Studies (not available with year abroad)

POSTGRADUATE
MA Applied Linguistics
MRes Analysing Language Use
PG Diploma Chinese-English Translation and Interpreting
MA Business Translation and Interpreting (Chinese-English)
MA Chinese-English Translation and Professional Practice

MA Conference Interpreting and Translation (Chinese-English)
MA English Language and Linguistics
MRes Experimental Linguistics
MA Linguistic Studies
MA, MRes Linguistics
MA Psycholinguistics
MA Language in Society
MA Teaching English to Speakers of Other Languages (TESOL)
MA Translation and Literature
MA Translation, Interpreting and Subtitling
MA Translation and Professional Practice
MA Translation and Professional Practice with Professional Placement
MPhil, PhD Analysing Language Use
MPhil, PhD Applied Linguistics
MPhil, PhD English Language Teaching
MPhil, PhD Experimental Linguistics
MPhil, PhD Linguistics
MPhil, PhD Psycholinguistics/ Sociolinguistics

Entry requirements
Please see our website for academic requirements.

English language requirements
■ Undergraduate – IELTS 6.0 overall
■ Postgraduate – 6.5 overall for Masters apart from MA Translation & Literature, MA Business Translation and Interpreting and MA Conference Interpreting and Translation, which in addition require minimum 6.0 in all components. 7.0 for research degrees. 6.0-6.5 in writing required for all courses

Please see www.essex.ac.uk/subjects for specific requirements.

Tuition fees:
■ Undergraduate: £15,000
■ Masters: £17,040
■ Research: £14,720

essex.ac.uk/linguistics

LAW AND HUMAN RIGHTS
■ Gain practical experience with our Essex Law Clinic and Human Rights Clinic ■ We are the first university in the UK to sign a memorandum of understanding with the United Nations High Commission for Refugees (UNHCR) ■ Our lecturers work with the UN, the UK government and with EU and foreign governments

UNDERGRADUATE
LLB Law +
LLB Law (Senior Status)
LLB Law with Business +
LLB Law with Finance +
LLB Law with Human Rights +
LLB Law with Politics +
LLB Law with Philosophy +

LLB English and French Law (Maîtrise) – including two years studying in France

POSTGRADUATE
MA Theory and Practice of Human Rights
MA Human Rights and Cultural Diversity
LLM Economic, Social and Cultural Rights
LLM International Human Rights Law
LLM International Humanitarian Law
LLM International Commercial and Business Law
LLM International Commercial and Business Law with Professional Placement

LLM International Trade Law
LLM International Trade and Maritime Law
LLM International Trade and Maritime Law with Professional Placement
MPhil, PhD Human Rights
MPhil, PhD Law

+ This course has an optional year abroad variant

Entry requirements
Please see our website for academic requirements.

English language requirements
■ Undergraduate – IELTS 6.0 overall
■ Postgraduate – IELTS 6.5 for Masters courses (including 6.0 in writing), 6.5 for law research courses (including 6.5 in writing) and 7.0 for human rights research courses (including 6.5 in writing for selected courses)

Check essex.ac.uk/subjects for specific requirements.

Tuition fees:

- Undergraduate: £15,750
- Masters: £17,040
- Research: £14,720

essex.ac.uk/law

LIBERAL ARTS AND AREA STUDIES

- Flexible degree structures allow you to build a course according to your interests, or major in a specific field
- Gain international experience by studying abroad for a term or a year
- A wide variety of language options is available

UNDERGRADUATE

BA American Studies (United States) +

BA American Studies (United States) with Film +

BA Criminology and American Studies +

BA European Studies (including Year Abroad)

BA European Studies and Modern Languages

BA European Studies with French/ German/Italian/Spanish

BA European Studies with Politics

BA Latin American Studies

BA Latin American Studies with Business Management

BA Latin American Studies with Human Rights

BA Liberal Arts +

BA Global Studies +

BA Global Studies and Modern Languages +*

+ This course has an optional year abroad variant
Where optional year abroad is not shown, the course includes a compulsory term or year abroad.
* This course has an optional placement year variant

Entry requirements

Please see our website for academic requirements

English language requirements

- Undergraduate – IELTS 6.0

Tuition fees:

- Undergraduate: £15,000

essex.ac.uk/cish

LITERATURE, FILM, AND THEATRE STUDIES

- We're ranked in the UK's top 10 for dance, drama and cinematics (Complete University Guide 2018)
- Our undergraduate courses in Journalism develop your skills across all media – radio, television, print, online and social networks
- Students have access to our dedicated film screening and editing facilities and media centre

UNDERGRADUATE

BA Creative Writing +

BA Drama +

BA Drama and Literature +

BA English and United States Literature +

BA English Literature +

BA English and Comparative Literature +*

BA Film and Creative Writing +

BA Film Studies +

BA Film Studies and Literature +

BA Journalism with Business Management +*

BA Journalism and Literature +*

BA Journalism and English Language +*

BA Journalism and Politics +*

BA Journalism and Philosophy +*

BA Journalism and Liberal Arts +*

BA Journalism with Human Rights +*

BA Journalism and Modern Languages

BA Journalism and Sociology +*

BA Journalism and Criminology +*

BA Journalism and Economics +*

BA Multimedia Journalism +

BA Literature and/with Modern Languages +

BA Literature and Creative Writing +

BA Literature and Sociology +

POSTGRADUATE

MA American Literatures

MA Avant-Gardes

MA Literature

MA Film and Literature

MA Film Studies

MA Creative Writing

MA Playwriting

MA Theatre Practice

MA Wild Writing: Literature, Landscape and the Environment

MAD, MPhil, PhD Creative Writing

MAD, MPhil, PhD Film Studies

PhD Film Studies (Creative Practice)

PhD Journalism

MAD, MPhil, PhD Literature

MAD, MPhil, PhD Theatre Studies

+ This course has an optional year abroad variant
* This course has an optional placement year variant

Entry requirements

Please see our website for academic requirements.

English language requirements

- Undergraduate – Multimedia Journalism - IELTS 7.0 overall with a minimum of 5.5 in each component. All other undergraduate courses - IELTS 6.0 overall
- Postgraduate – IELTS 7.0 overall with 6.5 in writing

Tuition fees:

- Undergraduate: £15,000
- Masters: £17,040
- Research: £14,720

essex.ac.uk/lifts

MATHEMATICS AND ACTUARIAL SCIENCE

- Mathematics at Essex is ranked fourth in the UK for graduate employability (Guardian University Guide 2018)
- We offer postgraduate courses specialising in data science and statistics, with an option to include a professional placement
- BA Actuarial Science offers exemptions from all eight IFA examinations

UNDERGRADUATE

BSc Actuarial Science +*

BSc Data Science and Analytics +*

BSc Economics and Mathematics +*

BSc Finance and Mathematics +*

BSc Mathematics +*

BSc Mathematics and Statistics +*

BSc Mathematics with Computing +*

BSc Mathematics with Physics +*

POSTGRADUATE

MSc Actuarial Science

MSc Data Science

MSc Data Science with Professional Placement

MSc Mathematics

MSc Mathematics and Finance

MSc Statistics

MSc Statistics and Operational Research

Postgraduate Diploma Actuarial Science

Postgraduate Diploma Mathematics and Finance

Postgraduate Diploma Statistics and Finance

Postgraduate Diploma Statistics and Operational Research

Graduate Diploma in Mathematics

MSD, MPhil, PhD Applied Mathematics

MSD, MPhil, PhD Bioinformatics

MSD, MPhil, PhD Biostatistics

MSD, MPhil, PhD Mathematical Biology

MSD, MPhil, PhD Mathematics

MSD, MPhil, PhD Operational Research

MSD, MPhil, PhD Pure Mathematics

MSD, MPhil, PhD Statistics

+ This course has an optional year abroad variant
* This course has an optional placement year variant

Entry requirements

Please see our website for academic requirements

English language requirements

- Undergraduate – IELTS 6.0 overall
- Postgraduate – IELTS 6.0 overall

Tuition fees:

- Undergraduate: £15,750
- Masters: £17,040
- Research: £14,720

essex.ac.uk/maths

PHILOSOPHY AND ART HISTORY

- We're ranked top 10 in the UK for Philosophy (TGUG 2018)
- We're ranked top 10 in the UK for History of Art (TGUG 2018)
- We are home to ESCALA, the most important collection of Latin American art in Europe

UNDERGRADUATE

BA Art History +

BA Art History and History +

BA Art History and/with Modern Languages +

BA Film Studies and Art History +

BA Curatorial Studies +

BA Literature and Art History +

BA Philosophy and Art History +

BA Philosophy +

BA Philosophy, Religion and Ethics +

BA Philosophy and History +

BA Philosophy and Law +

BA Philosophy and Literature +

BA Philosophy and Politics +

BA Philosophy and Sociology +

BA Philosophy with Human Rights +

POSTGRADUATE

MA Art History and Theory

MA Curating

MA Curating with Professional Placement

Graduate Diploma in Art History and Theory

Graduate Diploma in Philosophy

MA Philosophy and Art History

MA Philosophy (Continental Philosophy pathway)

MA Philosophy (Critical Social Theory pathway)

MA Philosophy (Philosophy and Psychoanalysis pathway)

MAD, MPhil, PhD Art History and Theory

MAD, PhD Philosophy

+ This course has an optional year abroad variant
* Four years including year abroad

Entry requirements

Please see our website for academic requirements.

English language requirements

- Undergraduate – IELTS 6.0 overall
- Postgraduate – IELTS 6.0 for Graduate Diplomas, IELTS 6.5 with 6.0 in writing for art history masters courses, IELTS 7.0 for art history research degrees and all philosophy courses

Tuition fees:

- Undergraduate: £15,000
- Masters: £17,040
- Research: £14,720

essex.ac.uk/spah

POLITICS AND INTERNATIONAL RELATIONS

- Ranked among the top 40 departments in the QS World University Rankings (2018)
- We're top five for Politics (TGUG 2018)
- We have always been the highest-rated politics department in the UK (REF 2014, mainstream universities, Times Higher Education 2014)

UNDERGRADUATE

BA Politics +*

BA Politics and International Relations +*

BA International Relations +*

BA International Development +*

BA Philosophy, Politics and Economics +*

BA Economics and Politics +*

BA Political Economics +*

BA Political Theory and Public Policy +*

BA Politics with Human Rights +*

POSTGRADUATE

MA Politics

MA, MSc Conflict Resolution

MA, MSc Global and Comparative Politics

MA Ideology and Discourse Analysis

MA, MSc, MRes International Relations

MA, MSc, MRes Political Economy

MA, MSc, MRes Political Science

MA Political Theory

MA, MSc Public Opinion and Political Behaviour

MA United States Politics

Graduate Diploma Politics

PhD Government

+ This course has an optional year abroad variant
* This course has an optional placement year variant

Entry requirements

Please see our website for academic requirements.

English language requirements

- Undergraduate – IELTS 6.0 overall
- Postgraduate – IELTS 6.5 overall

Tuition fees:

- Undergraduate: £15,750
- Masters: £17,040
- Research: £14,720

essex.ac.uk/government

PSYCHOLOGY

- Exceptional research labs and facilities, including our Centre for Brain Science
- Courses accredited by the British Psychological Society
- We achieved 91% student satisfaction in the latest assessment (NSS 2017)

UNDERGRADUATE

BA, BSc Psychology ⁺*

BSc Psychology with Cognitive Neuroscience ⁺*

BSc Psychology with Economics ⁺*

POSTGRADUATE

MSc Psychology (conversion course)

MSc Research Methods in Psychology

MSc Cognitive Neuroscience and Neuropsychology

MSD, MPhil, PhD Psychology

* Optional study abroad year available

* Optional placement year available

Entry requirements
Please see our website for academic requirements.

English language requirements
■ Undergraduate – IELTS 6.0 overall
■ Postgraduate – IELTS 7.0 overall

Tuition fees:
■ Undergraduate: £16,980
■ Masters: £17,040
■ Research: £17,040

essex.ac.uk/psychology

PSYCHOSOCIAL AND PSYCHOANALYTIC STUDIES

- We achieved 94% student satisfaction in the latest assessment (NSS 2017)
- The Department incorporates the Centre for Trauma, Asylum and Refugees
- We've got strong links with the local National Health Service, education and care services and professional institutions

UNDERGRADUATE

FdA, BA Therapeutic Communication and Therapeutic Organisations ⁺(C)(S)

BA Psychoanalytic Studies ⁺(C)

BA Therapeutic Care ⁺(C)

BA Childhood Studies ⁺(C)

POSTGRADUATE

MA Psychoanalytic Studies

MA Jungian and Post-Jungian Studies

MA Refugee Care

PG Diploma, MA Management and Organisational Dynamics

MA Psychodynamic Counselling

Graduate Diploma in Psychodynamic Counselling

PhD Psychoanalytic Studies

PhD Refugee Care

(C) Colchester Campus

(S) Southend Campus

* Optional study abroad year available

* Optional placement year available

Entry requirements
Please see our website for academic requirements.

English language requirements
■ Undergraduate – IELTS 6.0 overall
■ Postgraduate – IELTS 6.5 for taught courses, IELTS 7.0 for research degrees

Tuition fees:
■ Undergraduate: £15,000
■ Masters: £17,040
■ Research: £14,720

essex.ac.uk/cps

SOCIOLOGY AND CRIMINOLOGY

- Ranked among the top 40 departments in the QS World University Rankings (2018)
- We're ranked top 25 in the UK (TGUG 2018)
- Dedicated student resource centre offering academic and personal support

UNDERGRADUATE

BA Criminology ⁺*

BA Criminology with Counselling Skills ⁺*

BA Criminology with Criminal Law ⁺*

BA Criminology with Social Psychology ⁺*

BA Communications and Digital Culture ⁺*

BA Sociology ⁺*

BA Sociology and Criminology ⁺*

BA Sociology and Politics ⁺*

BSc Sociology with Applied Quantitative Research Methods ⁺*

BA Sociology with Counselling Skills ⁺*

BA Sociology with Human Rights ⁺*

BA Sociology with Psychosocial Studies ⁺*

BA Social Anthropology ⁺*

BA Social Anthropology with Human Rights ⁺*

BA Sociology with Social Psychology ⁺*

POSTGRADUATE

MA Advertising, Marketing and the Media

MSc Criminology and Socio-Legal Research

MA Criminology

MA, MSc Migration Studies

MA Sociological Research Methods

MA Sociology

MSc Survey Methods for Social Research

MSc Organised Crime, Terrorism and Security

MA Sociology and Management

MA Sociology by Dissertation

MPhil, PhD Criminology

MPhil, PhD Sociology

PhD Survey Methods

* This course has an optional year abroad variant

* This course has an optional placement year variant

Entry requirements
Please see our website for academic requirements.

English language requirements
■ Undergraduate – IELTS 6.0 overall
■ Postgraduate – IELTS 6.5 overall (with all scores 6.0+)

Tuition fees:
■ Undergraduate: £15,000
■ Masters: £17,040
■ Research: £14,720

essex.ac.uk/sociology

SPORTS, REHABILITATION AND EXERCISE SCIENCES

- Gain work experience through placement periods and at our on-campus Sports Therapy Clinic
- Practice your skills in our dedicated Sports and Physiotherapy labs
- Work with elite athletes and gain experience in our renowned Human Performance Unit

UNDERGRADUATE

BSc Physiotherapy

BSc Sports and Exercise Science ⁺*

BSc Sports Performance and Coaching ⁺*

BSc Sports Therapy ⁺*

POSTGRADUATE

MSc Physiotherapy (Pre-Registration)

MSc Sport and Exercise Psychology

MSc Sport and Exercise Science

MSD, MPhil, PhD Physiotherapy

MSD, MPhil, PhD Sports and Exercise Science

MSD, MPhil, PhD Sports and Exercise Medicine

MSD, MPhil, PhD Sports and Exercise Psychology

MSD, MPhil, PhD Health and Exercise Sciences

MSD, MPhil, PhD Health and Physical Activity

MSD, MPhil, PhD Sports Therapy

* This course has an optional year abroad variant

* This course has an optional placement year variant

Entry requirements
Please see our website for requirements.

English language requirements
■ Undergraduate – Physiotherapy - IELTS 7.0 overall with a minimum of 6.5 in each component. All other undergraduate courses - IELTS 6.0 overall
■ Postgraduate – IELTS 6.5 for MSc Sports and Exercise Science and all research degrees, IELTS 7.0 with no element below 6.5 for MSc Physiotherapy

Tuition fees:
■ Undergraduate: £15,750 (fee for BSc Physiotherapy TBC)
■ Masters: £17,040
■ Research: £17,040

essex.ac.uk/sres

PATHWAY PROGRAMMES AT UNIVERSITY OF ESSEX INTERNATIONAL COLLEGE

University of Essex International College, a partnership between the University of Essex and Kaplan International Pathways, provides pathway courses that can prepare you for your degree study.

UNDERGRADUATE

Foundation certificate

- Humanities
- Science and Health
- Social Sciences

International Year One

- Business
- Economics

POSTGRADUATE

Pre-masters

- Humanities
- Science and Health
- Social Sciences

PRE-SESSIONAL ENGLISH LANGUAGE COURSES

We offer pre-sessional English language courses which can be taken before your degree if you are international student and do not meet our English language entry requirements. Our courses will help you improve your English. Upon successful completion of the pre-sessional course you will be able to proceed on to your degree course without having to retake IELTS. Our pre-sessional courses are delivered in partnership with Kaplan International College.

For further information about these courses and to apply please visit kaplanpathways.com/colleges/university-essex-international-college

IMPORTANT INFORMATION

About this prospectus

When we might make changes to advertised courses and other information

This prospectus tries to answer your questions about life and academic provision on offer at the University of Essex. It was prepared in 2018 and refers to courses which will be available in October 2019. The University makes every effort to ensure the prospectus is accurate at the time it is printed. Exceptionally, it can be necessary to make changes, for example to courses, facilities or fees due to legitimate staffing, financial, regulatory or academic reasons. Examples of such reasons might include a change of law or regulatory requirements, industrial action, lack of demand, departure of key personnel, change in government policy, or withdrawal or reduction of funding. Changes to courses may for example consist of variations to the content and method of delivery of programmes, courses and other services, to discontinue programmes, courses and other services and to merge or combine programmes or courses. If a course change or closure is proposed in such circumstances the University will take all reasonable steps to minimise disruption to students. This will include informing students of the changes in advance and giving them appropriate opportunity to comment on the proposals.

A course would only be closed in exceptional circumstances. If it is ever necessary to close a course the University's preferred approach would be to continue to teach current students on that course until they have completed their studies. If exceptionally that is not possible, the University will explore other options with the affected students for example by considering whether those students can be offered places on alternative courses, or whether their studies can be completed at another institution.

essex.ac.uk/subjects
essex.ac.uk/fees

No liability for matters outside our control

The University cannot be held responsible for failure/delay in performing obligations caused by things beyond its reasonable control, such as fire, flood or industrial action.

University terms and conditions, procedures, rules and regulations

Applicants are considered in line with the University's Admissions Policy and the Regulations relating to Admission (listed under Academic Regulations), which can be found online at:

essex.ac.uk/admissions-policy
essex.ac.uk/admissions-regs

If your application to the University of Essex is successful, by accepting the offer you will be entering into a legal contract with us, subject to fulfilling any conditions included in your offer. Your rights and obligations to us and our rights and obligations to you will be detailed in the information that we provide once the offer has been made. Applicants and registered students must comply with the University's regulations, policies and procedures as part of their contract. A full set of the University Regulations is available at:

essex.ac.uk/regs

The full Procedures, Rules and Regulations of the University, governing how it operates, are set out in the Charter, Statutes and Ordinances and in the University Regulations, Policy and Procedures.

essex.ac.uk/about/governance/regulations/students.aspx

Quality assurance

The Quality Assurance Agency's Higher Education Review of the University in December 2014 covered every aspect of the University's provision and confirmed that the University had met all expectations and meets national requirements for standards and quality.

The University was commended for the strong focus on improving all areas of the student learning experience. The high-quality research environment and development opportunities offered to postgraduate research students were recognised, along with our commitment to listening and responding to student feedback, and to providing our students with opportunities to improve their employment skills and prospects.

qaa.ac.uk

Policy statement on equality and diversity

The University of Essex celebrates diversity, challenges inequality, and is committed to sustaining an inclusive and diverse community that is open to all who have the potential to benefit from membership of it. We ensure equality of opportunity for all its members. We expect staff, students and visitors to be treated, and to treat each other, with dignity and respect regardless of age, disability, gender reassignment, marriage and civil partnership, pregnancy and maternity, race, religion or belief, sex, sexual orientation, socio-economic background, political beliefs and affiliations, family circumstances or other irrelevant distinction.

Tuition fee increases during your studies

For full-time undergraduate students and postgraduate students on courses with a duration of more than one year with an international fee status, tuition fees normally increase for each academic year of study. This annual increase will be 5% or the annual increase in the RPI-X index, whichever is the higher.

essex.ac.uk/fees

East 15 Acting School at our Loughton Campus

This prospectus refers mainly to the services, facilities and courses on offer at our Colchester Campus and at our Southend Campus. Our Loughton Campus is the base for students on many of East 15 Acting School's courses and includes state-of-the-art studios, technical equipment and innovative theatre space. Our Loughton Campus is just five minutes from the nearest London Underground station, Debden, on the east end of the Central line.

east15.ac.uk

Photography

Every effort has been made to obtain permission to reproduce the images contained herein. We would like to thank the student contributors, photographers and Instagrammers who kindly granted us permission to use their content.

Data for marketing purposes

Data has been selected for marketing purposes but all claims are based on the most recent data that were available at the time of print: Research Excellence Framework (REF) results are based on 2014 data*; QS World University Rankings results are based on 2018 data; QS World University Rankings by Subject results are based on 2018 data; Times Higher Education (THE) World University Rankings results are based on 2018 data; National Student Survey (NSS) results based on 2018 data; Times Good University Guide (TGUG) results are based on 2017 data. Guardian University Guide results are based on 2018 data.

* Intensity-weighted GPA is denoted by the phrase 'research excellence'; raw GPA is denoted by the phrase 'research quality'.

Colchester Campus

Wivenhoe Park
Colchester CO4 3SQ
United Kingdom
T +44 (0)1206 873333

Southend Campus

Elmer Approach
Southend-on-Sea SS1 1LW
United Kingdom
T +44 (0)1702 328200

Undergraduate admissions
E admit@essex.ac.uk

Postgraduate admissions
E pgadmit@essex.ac.uk

Contact our regional offices:

Africa
E africa@essex.ac.uk

China
E china@essex.ac.uk

India and subcontinent
E india@essex.ac.uk

Middle East and North Africa
E mena@essex.ac.uk

South East Asia
E SEAsia@essex.ac.uk

Keep up-to-date by following us on Facebook, Twitter and Vimeo:

-  **facebook.com/essexuniio**
-  **twitter.com/uessex_intl**
-  **vimeo.com/uniofessex**

